

newsletter

bmwor.org.nz

BMW Motorcycle Club
BMW Owners Register
of New Zealand



november
2014



Give your insurance a performance additive.

Star Insurance is the leading motorcycle insurer in New Zealand, we protect thousands of kiwi motorcycles, and we'd love to add yours.

With a dedicated claims service team and our additional policy benefits we're the envy of other insurers. Therefore it's only natural we're recommended by more brokers and advisers than any other insurance company.

So next time you talk to your broker or adviser insist on Star Insurance.



Star Insurance
Motorcycle Insurance

☎ 0800 96 8000 | starinsurance.co.nz



bmwor.org.nz

Send editorial copy to:

The Editor
27 Omapere Road
Kaikohe 0405
editor@bmwor.org.nz

All other correspondence to:

The Secretary
BMWOR of NZ
P O Box 109-245
Newmarket
AUCKLAND 1149
NEW ZEALAND

PRESIDENT

Peter Tibbs
(06) 378 2242
president@bmwor.org.nz

VICE PRESIDENT

Peter Bath
(027) 228 7564
vicepresident@bmwor.org.nz

SECRETARY

David Oldershaw
(029) 200 3679
secretary@bmwor.org.nz

TREASURER

Robin Wood
treasurer@bmwor.org.nz

EDITOR

Bruce Crowther
(09) 401 0029
editor@bmwor.org.nz

MEMBERSHIP SECRETARY

Folker Liebenow
(06) 874 8506
membership@bmwor.org.nz

BMWOR GEAR

Ian Sowden
regalia@bmwor.org.nz

ARCHIVIST

Paul Edlington
(09) 478 3903
pauledlington@xtra.co.nz

please note

Any material intended for publication in the newsletter should reach the Editor no later than the 15th day of the month preceding publication. The newsletter is an open forum for all members. Views expressed by members may not necessarily represent the views of BMWOR of NZ. Publication of all material is subject to the Editor's discretion. Photos are courtesy of article authors unless otherwise specified.

president's podium



Now we all know how lucky we are to have such a good newsletter. Your newsletter would not amount to anything without your contributions along with our advertisers.

Collectively all this information finds its way into Bruce's hands where he sets about organising all the contributions into the format which you sit down to read. I am sure Jean has some input as well, after all who else is going to proof read the newsletter for us.

Once Bruce has sent the newsletter file to the printers the newsletter then finds its way to David and Elizabeth Boyes's home as they host the folding team. This team works under the stewardship of Cheryl Marquis.

Cheryl and hubby Dave organise the postage to you once the folding team has completed the folding, labelling and sellotaping your newsletter.

Ann and I travel over 200kms to attend folding night. You might ask why we would travel so far to fold a newsletter? Well it is not just about folding a newsletter. The folding team make every km worthwhile with their camaraderie and fellowship. They are just such a great team of people to spend time with.

Of course the fish and chip dinner after the newsletter has been packed away ready for posting is not to be missed. At the end of the day nothing beats team work on or off the bike for having fun. When it all boils down to it we are not here for a long time so that's why it is so important that we make sure it is a good time we have working together. That way we stay together.

With this newsletter you should have also received your latest copy of the Tour Guide. Keep it somewhere safe. It could prove very valuable to you should you need to use it in an emergency. Of course the Tour Guide is just as valuable should you wish to share some time with fellow members when touring this country of ours.

Something that is causing me concern at the moment is the lack of an Area Representative at this time in some areas. If you take a look at the back of your newsletter you will see the areas that require an Area Rep. If there is a vacancy in your area why don't you give it a shot and help to build on the team spirit in your area.

The South Island Rag Rally is taking place this month. I know some members are taking the opportunity to combine this event with a tour of the South both to and from the Rally which takes place in Haast. It is with regret that Ann and I won't be able to attend this year's Rally as I will still be on the mend from my recent surgery and need to get myself back into shape for the 2015 Annual Rally.

Speaking about the Annual Rally, have you sent your entry form in yet? I know the Rally Team are putting a lot of effort into this event in order that you all have a great time. I look forward to catching up with you all in Wanganui in late January. There will be plenty to do and see in and around Wanganui over the weekend of our Annual Rally and A.G.M.

Just a little reminder, Dave Morris is compiling a record of the Register's first forty years. Whilst our archives hold a lot of information re the past forty years you are the living history of our Club and have something to contribute to the record that Dave is in the process of building. So we can all help out by sending Dave one or two of our stories. Contact Dave on 06 5653592 or email Dave at daverobertmorris@gmail.com or post your contribution to 12 Tarras Grove, Kelson, Lower Hutt. Many thanks for your contributions.

As always- wheels down, feet up

Peter

Cover Photo.

Stop over at the Kawana Mill on the Whanganui River Road, while Rangitikei riders were test flying one of the rides for the Rally weekend. The sparkles coming off the chromework on those bikes mean either they have a great fondness for polishing bikes in Rangitikei, or fierce sunlight, or all of the above.

Whatever the cause, take sunnies with you to the Rally.

BMW Owners Register Risk Management Plan

Introduction:

The BMW Owners Register is an organisation whose members join together for rides to nominated venues and for other social occasions. The organiser nominates the destination and regrouping stages along the way, but otherwise has no influence upon the way that riders behave on the road. There is no element of organised competition in the rides.

Riding Code:

1. All register members on register rides shall do so as individuals responsible for their own safety and shall take into account the safety of others they encounter on the ride.
2. Register members are responsible for ensuring that their motorcycles are in a safe and legal condition, the minimum being to Warrant of Fitness standards.
3. Riders, pillion, and sidecar passengers where required, shall have as a minimum Standards New Zealand approved motorcycle helmets, and stout footwear, gloves and clothing that will be capable of protecting their body in the event of a mishap.
4. Register members are to go to the aid of any others suffering a mishap.

5. Ride organisers shall nominate the destination for the ride as well as any regrouping locations or other stops. The organiser is not responsible for other riders' behaviour or safety.

6. Riders shall ride at a speed and in a way that is comfortable for them. Do not ride outside your personal comfort envelope.

7. If a rider is unfamiliar with the route, they shall arrange to follow another rider who does know the way and who travels at a comfortable pace.

8. Riders who decide to travel as a group shall adopt a staggered riding formation such that there is an accepted following distance to the rider immediately in front. A reasonable following distance is indicated by a time of two seconds between riders for dry conditions, and longer for inclement conditions and on loose surfaces.

9. The Organiser and or the Register are not responsible for participants' safety, and all participants participate at their own risk. All participants are aware that they are travelling on open public roads and are responsible for their own safety and compliance with all Road Rules and Laws.

events calendar

South Island RAG Rally

November 21 -23 Ad Page 9

other events

BRONZ Ride Right, Ride Safe. A great way to get to know your new bike. Usually third Sunday of the month at the Whenuapai Airbase. Contact Finn on 09 625 5533 or 027 484 6326 for details.

More detail at rrrs.org.nz - and they can **BRING THE COURSE TO YOU** if you can come up with the numbers and a venue: speak to Finn.

bmwor area events

Please note that rides start at varying times and/or places. Read the event notices carefully and, if in doubt, contact the Area Rep (details on rear cover) or ride organiser (if noted) for assistance. On most rides there is a rider briefing 5 minutes prior to departure, at which point riders are expected to be ready to go with bikes fuelled and bladders empty.

Every effort is made to ensure that details of events are correct at the time of printing. Please check the website (<http://bmwor.org.nz>) for current information on events or contact the local Area Rep if you have any questions.

northland

I'll email you: currently licking my wounds 'cos nothing works. I take requests!

auckland

Sat 15, Sun 16 November. Overnighter @ Coromandel details: <http://goo.gl/IFuA8n>

waikato

13th November Mystery Ride. Departs BP Connect on Tristram, Hamilton 9:30 am (No s**t, Sherlock, I checked with Chocky - it's a mid-weeker. Ed.)

19th November Coffee & Chat Night. Venue to be emailed out closer to time.

29th & 30th November Overnighter to Gisborne & Back. Departs Cambridge BP at 9:00am. Please let me know if interested so I can arrange accommodation.

bay of plenty

November 7th-8th-9th - "Ride the Gentle Annie" weekend away staying Ohakune and Napier. Email bayofplenty@bmwor.org.nz for accommodation and details flyer. Join up for all, or part, of this great weekend. If you're unable to come for the whole weekend and still feel like a ride out Sunday then contact us and we can meet half way somewhere on the way back up from Napier.

Saturday November 29th 6pm - Xmas Party Pot-luck Dinner - at Doug & Mary's: 12c Grace Ave, Mount Maunganui. (Street parking only). Bring \$5 secret santa pressie, some Xmas fodder to share and enjoy a great night out.

rangitikei

Sunday 9 November - Ride Waiouru Museum via Fields Track. Peer Nielsen

Tuesday 25 November - Dinner One Wish Levin (former Oxford Hotel). John Christie

Sunday 14 December - Christmas Dinner at Oma Ruby Wanganui. Lance & Heather

east coast

Monthly gathering at the Puketapu Hotel, 679 Puketapu Road, Puketapu. Last Tuesday of each month from 6:30pm onwards.

Sunday 9 November - Ride via Gentle Annie to Waiouru Army Museum for lunch. Meet at Caltex Omaha Road at 9:30am. All enquiries to Dan on 06 857 7058.

Sunday 14 December - BMWOR East Coast Christmas barbecue lunch hosted by Robyn and Warren Welch, St Georges Road North, Hastings, from 12 noon. BYO drinks and togs, and salad, bread or dessert to share. There will be a \$6 charge for meat. For catering purposes, please let Robyn know if you are able to come and what you are bringing (06) 870 7234.

area reports northland

Two Suzukis and Rusty and his Mum and Dad went to the Pizza Barn on the 12th October. One more member dropped in, and we said, "Hi."

But it turned out he was just doing his own thing.

I should despair that I can't find a winning formula, but Jean and I both got a ride and a champion pizza - that'll do.

It's been suggested (yet again) that my lack of BMW is a problem. Well, it isn't to me, but I'd be delighted to let somebody that has one be Area Rep, if only we had a volunteer.

Stay shiny side up.

Bwucie

waikato

I took over as Waikato area Rep just over a month ago and I'm sad to say not much has happened ride wise. This is due to ripping my left shoulder the day before going down to the Area Reps meeting at the end of August & only now being able to mount the bike again.

That's not to say Waikato is dead, far from it. July & beginning of August saw 3 rides being held on beautiful sunny days (although chilly starts). Joining me for the rides was my daughter Arabella, Graeme, Trevor, Mike and Phil. We all enjoyed the great back roads of the Waikato & parts of Taranaki.

On a more recent note our new Waikato BMW dealer (Boyd's Motorcycles) in Hamilton put on a BMW VIP evening. It was great to meet all the Boyd's team, BMWOR & prospective members that attended as well as BMW team from Auckland. We all got to see the latest & greatest from BMW. Oh what I could buy if I could only win Lotto. I would like to thank Greg Boyd, BMW & all the staff at Boyd's for putting on a great evening & hope to involve them more in the register in the future. Sorry I can't name everyone but would take up the whole newsletter.

Chocky

bay of plenty

A good turn out for pot luck dinner in September, thanks again to Ian and Carol for a great night and for everyone's hearty meals to share!

A mix and match month with some more storms passing through. Our ride around the lakes took a rain check as our ride leader was recovering from a virus and weather storms passed through. Although it turned out to be a stunning day in Tauranga city, our Whakatane members informed us it was pretty shabby down that way, so we all got a good lie-in as daylight saving stole an hour from us!

Our next ride to Te Aroha took a different impromptu route winding through some stunning Waikato scenery and minor unknown back routes, (not quite sure where we were?) ending up south of Cambridge. Getting hungry we had a yummy lunch at the Crazy Cow in Morrinsville, then back via TeAroha, Paeroa, Waikino back roads and home.

We're now looking forward to our weekend away via Ohakune and Napier, riding the Gentle Annie, so "Annie get your gun" and book your accommodation (just email us if you want more info on where we are staying and copy of our flyer). We plan to leave around midday Friday or let us know where ever you want to join in.

End of November we hope we can bring all our BOP members out for a special Xmas bash and fun night out at Doug & Mary's! Then maybe squeeze in that ride around the Lakes in December before the loonies hit the road for holiday breakup (those weeks before Xmas are often great riding weather with very little traffic).

It's a busy time of year coming up, but don't forget to give yourself time to remember why you bought that bike and TAKE IT OUT FOR A RIDE!!!

See you soon....

Mike Long and Geri Goodman rangitikei

We are good at gathering for a meal together on the last Tuesday of the month. The September meal was the first since Daylight Saving had fired up, and we can proudly say that 2 of the 12 members arrived on motorcycles. Well done Rob and Peer. Rob had tried to entice more out to play from Manawatu via a timely email. Next time perhaps.

The Club Hotel in Marton was a real find. Their system for taking food and drink orders and bringing said drink or meal to the right person was superb. And so was the meal. We would commend this venue to the new Area Rep. Yes ... a new Area Rep will be taking over the keyboard and stewardship from 1 March 2015. Why? Because, as of the 1 March 2015, I will no longer be the Area Rep. Yes I will miss the task, but it is time for a change.



Above: DaveO displays his wild enthusiasm for all things Secretarial. Barry looks like a bunny in the headlights, not sure just which way to jump.

Below: Mark's new bike being run in on the Whanganui River Road. Where else? Odo at this point was under 600 k.





Roger wags the finger while giving the always important ride briefing, "Listen up, there WILL be a test at lunchtime....."

Barry (Chef de Mission) and I had a supplementary Rally meeting with National Sec Dave Oldershaw on 4 October. We covered heaps of detail related to the AGM. Things are falling (or, rather, being carefully put) into place now. Please register and book your bed for the weekend as soon as possible.

Peer and a wee team of members tried out one of the Unsealed Rides recently. That is looking good. No, not all unsealed and no, no goat tracks.

We put aside the ride plan for 12 October to go to Tawhiti Museum and instead went off on a sighting lap of one of the sealed road rides with Roger. He was grateful for the support of the crew on the test run.

The day was picture postcard perfect from start to finish. The group, with two borrowed from Ulysses, made its way to the Whanganui River Road off the Parapara highway. The first gather point was at the top of the Gentle Annie, where we were able to look out over the river from on high. We won't go into too many details about the rest of the day as that might spoil it for the Rally goers. Suffice to say that all traffic going our way pulled over and let us pass with ease. One was a humungous digger on the back of a truck. The message is to expect the unexpected, keep an eye out for the odd bit of gravel spilled on the seal, and enjoy

the scenery, the Kawana Mill, and the church at Jerusalem.

After lunch at Ohakune, we can report that Turoa ski fields were flat out, and air was pure and at a balmy 10 Celsius. Home was via some of the Paraparas and a bit on the side. The ride length and Rogers detailed planning means that this a definite "yes" for the Rally next January.

Lance Nixon 1550

welcome

A warm welcome to our new members this month:

Gordon Lidgard - Cheviot

Scott Huppert - Taupo

We hope you'll take part in many of your local and national events. Your Area Rep will be pleased to introduce you to other members in your area.

Our monthly newsletter is an open forum for all members. If you fancy having a story (and photos) published about your ride, the rebuild of your bike, a book you might have read or a movie you have seen lately, or just want to get something off your chest about how the club is going, then get in touch with the Editor no later than the 15th day of the month preceding publication. We welcome your contribution.

east coast

Once again, the day dawned fine and sunny for our monthly club ride. We gathered at Caltex Omaha Road in Hastings – our usual spot when heading south – three solos and two two-ups. With most members back from overseas, the Pearces and Wutses were now away cycling in the South Island. We travelled via some little used back roads, arriving at the Paper Mulberry at Te Aute just as Dan and Rosemary dismounted. The queue for coffee was long and slow and we wondered about heading somewhere else, but in reality we only waited a few minutes for our drinks to be served to us outside in the sun.

We then headed north on some more country roads, with Dan leading, and eventually arrived at the Chook and Filly at Maraekakaho for our lunch. Robyn and Warren were already there sitting outside in the sun. We whiled away a very pleasant hour or so over lunch, watching and listening as other bikers rode past. When the talk turned to inside leg measurements, it was time for all to head off home. There wasn't a lot of riding involved this month but it was a very pleasant day out and nice catching up with everyone.

Marie Nichol



East Coasters at the Chook and Filly.

wellington

The September monthly ride was cancelled due to adverse weather so the selected destination Castlepoint, was visited as the October ride.

Sunday dawned a beautiful morning for the 4 riders who gathered at the Caltex Rimutaka for the 10 o'clock departure. Our ride coincided with the local Moto Mart dealership 'Honda day' based around Martinborough and the 'Pink' ride in support of the Breast Cancer charity so there were a lot of bikes heading to the Wairapapa.

We rode the Rimutaka hill and reassembled in Featherstone then headed to Carterton linking up with the Gladstone, Longbush and Lees Pakaraka roads leading onto Stronvar road which took us close to 'Casa del Tibsy' before turning onto the Castlepoint road for the long ride to the coastal settlement for lunch. Whilst having lunch we were joined by another member who rode his 800cc V4 Honda and joined us for lunch and the ride home.

The return ride involved some tiki touring through the back roads of the Wairapapa culminating in a coffee and fuel stop in Martinborough and a look at the large number of assembled bikes. We returned over the Rimutaka hill in nose to tail traffic confirming the popularity of the Wairapapa as a Sunday drive destination, and on home.

The roads of the Wairapapa are excellent for motorcycling with great surfacing and a rich mixture of straights and interesting twisties. In a former life (1970s) I can remember riding in a hill climb up the Admiral Hill and a flying quarter mile sprint on one of the straights in the Greytown, Carterton area. This tends to confirm the suitability of these roads for all forms of motorcycling.

This was another very enjoyable outing from both a riding perspective and from a camaraderie view point and looking forward to a long fine summer.

Until next time keep the bugs off your visor and the rozzers off your tail and stay upright.

Cheers

Peter Nash



Wellington riders posing with their not-BMW companion's scooter skillfully excluded from the shot.

nelson

(This is the real September ride report I'm not going into what or how happened, but Revti would have been a "Huzzadick" but for another person being even sillier. You work it out. Ed.)

Short, sweet and delightful is the only way to describe the September ride. 5 bikes and 5 riders, no pillions this weekend. Peter Wood who hasn't been for a ride with us for a long time turned up as well as William, Tony and Gretchen. But sadly we missed Dale and his son Ethan and Peter Unger from the Sounds who come on almost every ride. Dale has been in the operating theatre to repair his ankle and his leg is in plaster for another few days. He hopes to come on the ride next month. But he did turn up in his car at the meeting site to see us off for the ride.

This ride was only to St Arnaud's via Kohatu pub, or what was the pub, now a cafe. Had coffee at Kohatu and headed south to St Arnaud via the Korere-Tophouse Road. This is not a well travelled road and during our whole journey on this road, which branches off to south east a few kilometers from Kohatu, we only saw one car.

There is a new cafe at St Arnaud but it was closed so by majority consensus we purchased some sandwiches from the store/petrol station rode down to the lake and had our lunch by the lake shore.

From the jetty you could see the normal attraction in the water, large eels and there were plenty of ducks and sea gulls on the water looking for food as usual.

A pleasant day as far as the weather was concerned, little bit of gentle breeze but sunny. There was still a little snow on the high peaks in the distance, which is to be expected for this time of the year.

We talked a bit about the RAG rally in November to see who is heading south. Both Gretchen and Tony have already booked their accommodation. Tony has to go anyway, he is one of the chief organizers.

After an hour and a half of lunch on the shore we headed home.

Next ride is to Westport, a warm up for the RAG rally the following month.

Revti Verma

Huzzadick?

Revti would have been a natural after the inexplicable case of the September Ride Report, but he got gazzumped by more deserving cases. Actually both people featured are more victims than offenders, but never mind, we will make them famous in accordance with our motto: **"Never Let The Truth Interfere With A Good Story."**

Our Glorious Leader, **His Tibbsness Peter**, is scheduled for surgery at time of writing (and should be recovering as you read this.) Mrs Tibbs clearly doesn't trust Our Leader to behave while doing his rehab. So **Ann** has, in her "Nurse Maude" persona, kindly de-registered the Presidential GS to keep him out of trouble.

Robin Wood set out on his GS on a filthy day to ride from home at Palmerston North to Masterton, where he was required as a commissaire for a cycle event. He arrived at the start, where photographer Peter Tibbs went to catch up with him.



After the cycles had left, they sought him here.



They sought him there.



They even sought him out on the road with the crazy people taking on the weather on their bicy-icles.

But Robin was doing a "Scarlet Pimpernel", he was nowhere to be seen.

No, the organisers had taken pity on Robin and put him in a car for the day, where he no doubt got a chance to dry out and warm up, before getting back on the bike and heading back home getting all wet and miserable again.



SOUTH ISLAND RAG RALLY

HAAST..... November Friday 21 to Sunday 23.

This is the weekend preceding the Burt Munro. Have a pre silly season break & join us at

Haast River TOP 10 Holiday Park

Reservations – 0800 624 847 www.haasttop10.co.nz



Details are still being refined but expect a great selection of riding roads to converge on the venue, a ride down the gravel to gaze at the Cascade River and dream of a through-route to Te Anau, lunch at Jackson's Bay (crayfish, anyone?), food drink and conversation within staggering distance of bed, maybe the odd sandfly, and hopefully some sunshine (pack the mossie repellent and waterproofs just in case...)

Accommodation should be booked directly with Haast River TOP 10, but please let us know if you're planning to attend (email to otagosouthland@bmwor.org.nz would be great) so we can keep track of numbers and plan to get enough craypots out to ensure lunch. We'll also do our best to run a clearing service for spare beds through the same email address so let us know if you've got part of a cabin or unit you'd like to share, or if you're looking to share and wondering if anybody already has a booking you could add yourself to; we'll put potentially compatible parties in touch with each other and leave it to you to work things out.

Look forward to seeing you there,

Tony & Andy

From the Forum, October 13:

There's a better than even chance a crew from Nelson will be gravel tiki touring down. As below. Day 1 is 19th November. Givus a yodel if interested. (tony@kaka.co.nz)

Day1 Nelson > Maruia Saddle > Hurunui > Mason's Flat > Amberly > Whiterock > Okuku Pass > Lees Valley > Ashley Gorge > Oxford. 500 km.

Day 2 > Geraldine > Kakahu Bush > Opihi > Cave > McKenzie Pass > Hakataramea > Kurow > Dansey's Pass > Omakau > Thompson Pass > Cromwell. 380 kms.

Day 3 > Nevis Crossing > Q'town > Wanaka > Haast 370 kms.

Not big milages & plenty of coffee - photo - exploring stops.

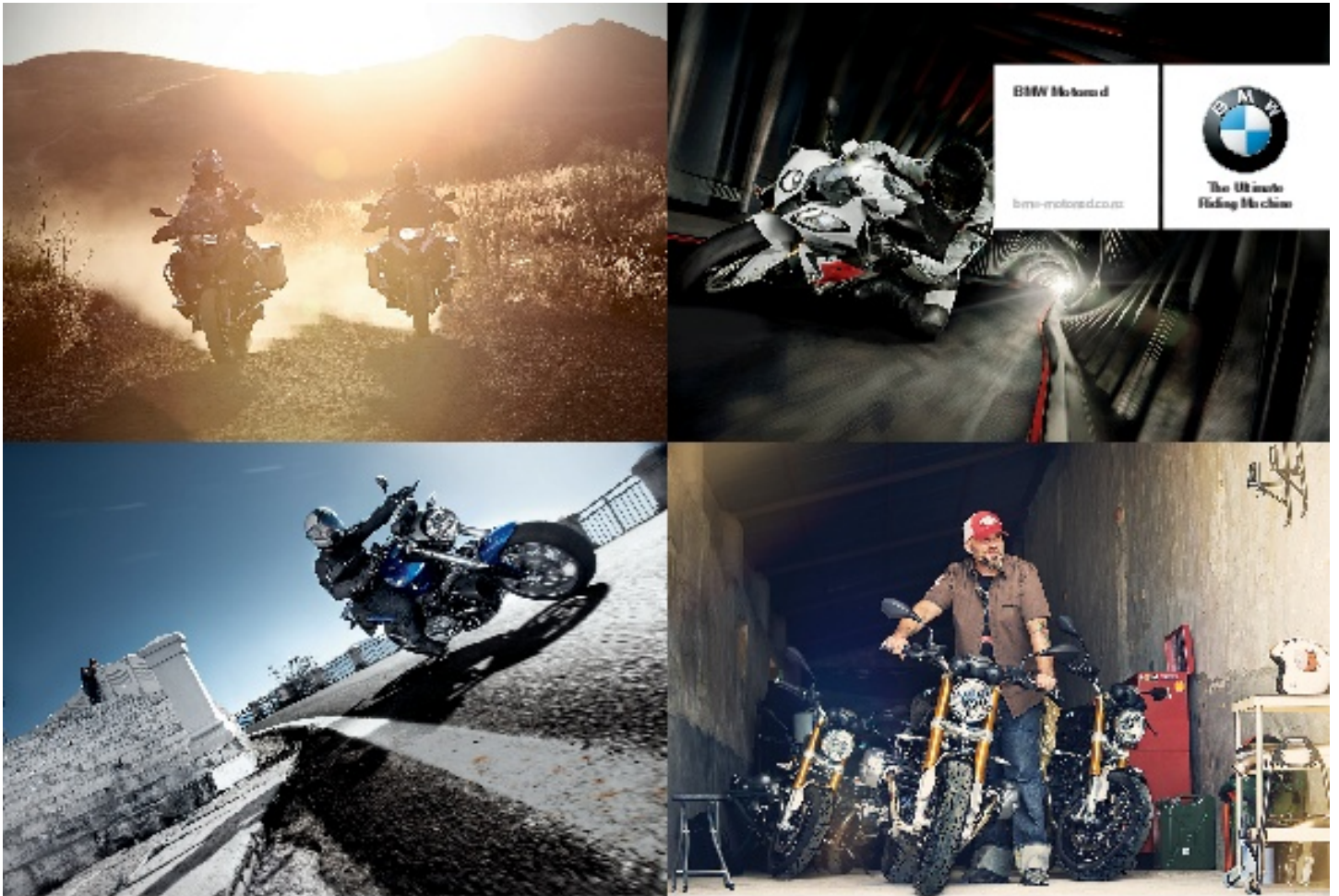
AON New Zealand

Put Your Insurance In Gear!

We have provided motorcycle insurance to BMWOR members for almost 20 years and our policy wordings and claims service continue to be a market leader.

But don't take our word for it, give us a call and experience our service for yourself.

Freephone: 0800 65 62 64



YES WE DO HAVE ALL THE BASES COVERED.

WHATEVER YOUR MOTORCYCLING WORLD LOOKS LIKE WE'VE GOT YOUR NEXT BIKE.

For BMW Riders it is better to travel than to arrive, whether riding solo or with a companion to share the occasion. Whether you revel in the rhythm of long distance travel, take to the track, hang out with your friends or head out for a Sunday morning scratch. Breathe the fresh air and enjoy the taste of freedom. Transform your dreams, into a reality, contact your nearest BMW dealer today and sample one of these four (or any of our other exciting) models today.



S1000R



R1200GSA



R1200RT



R nineT

Motomart
Wellington
04 589 5106

Todd Crighton
Sales Manager
027 447 7539

John Goss
CEO
027 258 9812

motomart



Losing Your Grip?
Get your new
HEIDENAU
Tires, or rental bike from:



4 McLean Drive Leithfield Amberley RD1
New Zealand
Ph 033149947 or 0274876570
e-mail: andrea@motorcyclere rentals.kiwi
web: www.kiwimotorcyclere rentals.com

**Support Your Club Members:
These Biker Friendly
Businesses Are Run By
BMWOR Members.**



ARCADIA MOTEL
CHRISTCHURCH
Comfortable, spacious affordable accommodation

FREEPHONE 0800 272 2342

564 Ferry Road, Woolston, CHRISTCHURCH, NEW ZEALAND • info@arcadiamotel.co.nz • www.arcadiamotel.co.nz



BOB & MAXINE'S BACKPACKERS

20 PATON PL (OFF ORAKA ST AT START OF THE MILFORD RD), TE ANAU

Phone (03) 249 7429 or email
bob.anderson@woosh.co.nz

- The best backpackers in Te Anau
- Superb views of Mt Luxmore
- 3 bedrooms with 6 bunks each BMWOR price \$30 per person
- 1 twin room with ensuite BMWOR price \$80
- 2 high class double rooms sharing a bathroom BMWOR price \$94
- Big, fully equipped kitchen, huge common room with satellite TV and log burner,
- Wifi now included in the tariff
- Heat pumps supporting the log burner
- Owners long time BMWOR members
- Garage for bikes available on request



BMWOR REGISTRATION FORM



23-25 January 2015

Name:..... Partners name:.....

Address:.....

Email:..... BMWOR#:.....

Phone:..... Mob:.....

Bike:..... Model:..... Year:.....

Please make your accommodation bookings direct with **Whanganui River Top 10 Holiday Park** by **Telephone, 06 343 8402**, (to be part of the BMWOR group).

☐ Please tick the box to indicate your interest in gravel rider training.

					Number	Cost	TOTAL
Registration						\$25.00	
Badge						\$12.00	
	Small	Medium	Large	X Large			
Men's polo						\$46.00	
Women's polo						\$46.00	
Friday Evening Dinner						\$15.00	
Saturday - Breakfast; Continental together with 2 hot options						\$12.50	
Saturday - Cut lunch						\$10.00	
Saturday - Rally Dinner						\$38.00	
Sunday - Breakfast; Continental together with 2 hot options						\$12.50	
Sunday - Cut lunch						\$10.00	
Sunday - BBQ Dinner						\$25.00	
Monday - Breakfast; Continental together with 2 hot options						\$12.50	
<input type="checkbox"/> Internet Banking (preferred)			<input type="checkbox"/> Cheque Enclosed			TOTAL	

All Registration Forms (and Cheques) to:

BMWOR 2015 Rally
C/- Neville Parker
10 Hampton Place
Wanganui
4501
027 630 1838
nevnkay@gmail.com

Payment by Internet Banking to:
TSB BMWOR RALLY Account:

15-3973-0032424-00

(Note, this is NOT the account you pay your sub into!)

Enter your Name and BMWOR Membership number with 'Rally' in Message /Reference.

General enquires to:

Rally Coordinator
Barry and Jeanette Hawthorn

06 344 8063
jeanandbarry@slingshot.co.nz

Registrations close on
15 November.

Disclaimer: This Rally will be run under the BMW Owners Register Risk Management Plan as in the Register's official Newsletter. By registering for this event participants agree to abide by all the conditions of the said Management Plan

2015 Rally Update.

Not registered yet? Cast your eyes at the page opposite, yellow box on the bottom. Time to get a wriggle on!

From the Whanganui I-site, if you want to organise your own time:



TOP 10 ATTRACTIONS

1. Te Āwa O Whanganui (Whanganui River) is the longest navigable river in New Zealand and attracts cyclists, hikers, canoeists and day trips. The river is part of Te Araroa, one of NZ's Great Walks and the Mountains to Sea Cycle Trail.
2. Te Whare O Rehua – the Sarjeant Gallery, holds more than 5,500 artworks in collections with a comprehensive NZ art history from the 1840's to the present day.
3. Whanganui Regional Museum is famed for its Taōnga Maori Collection and second to none in NZ.
4. The PS Waimarie is a unique turn-of-the-century paddle steamer and the last coal-fired paddle steamer in NZ.
5. Sixty-six metres high, the Durie Hill Elevator was built in 1919 and is NZ's only public underground elevator and one of only two in the world.
6. Chronicle Glass Studio allows public viewing of the glass blowing process and hot kilns in operation in a central city 1912 building.
7. The River Traders and Whanganui Farmers Market recreates days gone by of hustling trading activity with up to 100 stalls of food, art and crafts every Saturday morning.
8. The Mountains to Sea Cycle Trail is the longest and most diverse in NZ.
9. The river side Kowhai Park has entertained and delighted children over the decades with an octopus swing, snake see-saw, water maze and Tot-Town Railway.
10. Whanganui's events are second to none and encompass heritage, arts, glass art, opera, literary and sporting achievements and codes.

Business For the 2015 AGM

Remit (Submission of proposed remits for consideration is open and remits must be received by the Secretary no later than Sunday 12 October 2014.)

The remit proposes that Rule 5 (1) which currently reads:

“Elections will be held annually for the following honorary positions:

- (a) President
- (b) Vice President
- (c) Secretary
- (d) Treasurer
- (e) Editor
- (f) Membership Secretary”

Be amended to read:

“Elections will be held annually for the following honorary positions:

- (a) President
- (b) Vice President
- (c) Secretary
- (d) Treasurer
- (e) Membership Secretary
- (f) and one other Committee Member”



Proxy Vote AGM 2015

If you are unable to attend this Annual General Meeting but wish to appoint a proxy to vote on your behalf please complete this form.

1. Member Details

Name:

Address:

Membership Number:

2. Appointment of Proxy

The proxy must be a Member of the BMW Owners Register of New Zealand. You may appoint the Chairman as your proxy.

I appoint either the Chairman of the meeting (tick) or ☐

Name:

Address:

Membership Number:

as proxy to exercise my vote at the Annual General Meeting of the BMW Owners Register of New Zealand to be held on Saturday 24th January 2015 at 5:00 pm, and at any adjournment of that meeting. If the person I have appointed is unable to be my proxy then I appoint the Chairman of the meeting.

3. Voting Instructions

Please complete this section if
You wish to instruct your proxy
how to vote. If you want to give
Your proxy a free hand as to
How he or she is to vote then
Leave this section blank

I direct my proxy to vote in the following manner

Vote with a tick	For	Against
Re mit as published		

Signed Date

For this proxy to be valid, you must complete it and make sure it is received by the secretary no later than 5:00 pm on 12 January 2015. If you return this form without directing the proxy how to vote on any particular matter, the proxy will vote as he or she thinks fit.

Either

Post to the secretary, BMWOR, PO Box 109-245, Newmarket, Auckland 1149 or

Scan and email to secretary@bmwor.org.nz

Allow 10 working days from posting for mail to be received by the secretary.

This form can be downloaded as a printable file from:
<http://bmwor.org.nz/downloads/2015Proxy.pdf>

Rules for the award of Trophies

THE GUN TROPHY

Presented at AGM

Members to vote for best article of the year from a list published in the December newsletter. Votes are to be sent to secretary@bmwor.org.nz no later than 15 Jan 2015..

THE OOPS AWARD

Presented at AGM

Stories of a particular cock up under unusual/funny circumstances.

Members to send articles for the oops award to the secretary@bmwor.org.nz no later than 15 Jan 2015..

The Mitchell-Jansen Two Up Award (our pillion in a million)

Presented at AGM

Nominations to be sent to the secretary@bmwor.org.nz no later than 15 Jan 2015..

THE RICK KIRKMAN MEMORIAL TROPHY

Presented at AGM

For the winner of the Gymkana held at the National Rally.

THE FLY TROPHY

THE LADY RIDERS TROPHY

Presented at AGM

For the most points scored between 1st Dec and 30th Nov.

Nominations to be sent to the secretary@bmwor.org.nz no later than 15 Jan 2015.

Fly Spot Claim Form

1. 1 point per km traveled to, during and from an event.
2. 150 points for the crossing of the Cook Straight (300 return).
3. 200 points for attending a Charity Run.
4. Up to 300 points for promoting the Register in a positive way.

Name: _____ Membership Number: _____

Date of Event: _____ Name of Event: _____

Details of what you did to earn a bonus:

Points

Kilometers to and from an event: _____

Extra km during an event: _____

Cook Straight crossing: _____

Charity event bonus: _____

Bonus claimed: _____

Total Points:

Waikato's New Area Rep.

Due to life changes Mike Amphlett has had to resign as your Waikato Area Rep and has passed the reins onto me. I wish to thank Mike for volunteering me to replace him and wish him all the best for the future, when I hope to see him on a few rides.

For those of you that don't know me my name is Chris Talbot (AKA Chocky). My wife Michelle and I have been married for 15 yrs now and we have an 11 year old daughter, Arabella. I am totally motorcycle mad and will ride anywhere, anytime, no matter what the weather gods throw at me. It is my therapy and the best way to find peace in the hectic life we lead. Unfortunately my wife and daughter don't share my madness although they can be persuaded to come out for the odd days ride.

I have been riding for 33 yrs now and have owned 9 bikes in that time from 50cc to 1200cc. Bought my first bike (a Yamaha 100 2 stroke) at the age of 16 and did not get my first car till I was 29. Could not carry the hang glider or white water kayak on the bike, so had to buy a car to transport them on.

I joined the register in 1992 when I bought my first BMW, a shiny new Royal Blue K 1100 LT. I instantly fell in love with my little beemer and we had a beautiful 11 yrs love affair travelling everywhere together before she divorced me for a new owner, a police man from Christchurch. Hurt to see my blue beemer going down the road without me but had to put family first and you can't fit a newborn baby on a bike (needed a second car).

In 1996 I took a break from the Register as I was in two other clubs and did not have the time for a third. Deciding it was time to put a little thrill in my life I took up hang gliding and white water kayaking. The two sports worked well together as hang gliding was very weather dependent, so if I could not fly due to bad weather, I would go kayaking instead.

In 2011 after 8 hard yrs with no bike I decided my daughter was old enough so raced out and bought my current bike, a 1999 K1200LT (I'm in love again) and re-joined the Register. I am enjoying my rides even more the older I get, although my body seems to be complaining more than it did when I was 16, but I guess that the same for all of us.

I would love to meet the rest of the Waikato members (or any other BMWOR members) so come along for a ride with me next run, you're all welcome. The door's always open for a coffee and chat if you can't make it on a run.

Till then happy riding and keep the rubber side down.

Chocky

Motorcycle Marshals' required. 2015 NZ Cycle Classic 28th January - 1st February 2015

From Wednesday 28th January to Sunday 1st February the **New Zealand Men's Cycle Classic** will again be raced in the Manawatu. Race promoter, Jorge Sandoval, has once again asked the BMWOR to act as motorcycle marshals for the event.

The following link will give you more information: <http://www.cycletournz.com/>

What does this mean?

To give you some idea of the size, there will be approximately 100+ riders (local and international) taking part and of course there will be many officials and assistance crews.

We are being asked to act as race marshals, ensuring that road closures and traffic hazards are controlled.

We will be controlling a rolling road closure in conjunction with Police and race officials.

So, not only do you get a close up view of the racing but also get to do some 'creative and exciting' riding.

What do we need?

What we found from past events is ideally at least 8 riders are required each day (apart from the Wednesday TT's when only 3-4 will be needed).

They do not need to be the same riders each day, so, if you can only spare a day or two then we still need you.

FAQ's.

Insurance: Whilst you are part of the race convoy you will be covered by the race organisers 'Public Liability' insurance cover but, of course, you should also hold your own comprehensive cover.

Petrol reimbursement: The race organisers will make a donation to the BMWOR that in turn will be distributed equitably among those taking part.

Pillions: Marshals are not to be carrying a pillion. Some of the route is over narrow winding roads. You will at times be negotiating through the race peleton and support vehicles so there is a need to be nimble and agile on the bike. Like was said above 'some creative and exciting' riding!!

Accommodation: Anyone from out of town wanting to be a part of this and in need of accommodation just let Robin (treasurer@bmwor.org.nz) know.

What now?

Register your interest now by email to Robin.

This is a great opportunity for us to promote the BMWOR and be part of a fully televised International Cycle event. So please, put these dates into your calendar now and email Robin asap if you will be available.

In the past we have had riders from as far away as Dunedin, Nelson, Wellington and Auckland. Just ask anyone who took part if they enjoyed the experience. I'm sure you will get a positive response.

PS: Please note that this event is being held the week following the National Rally in Wanganui. You may want to consider extending your stay to this area!!

Compass Expeditions

We think that riding with a group of friends is the best way to experience the world and find that people who take part in our motorcycle adventures make new friends for future trips. A major motorcycle journey can be infinitely rewarding and, for those who have the time, there are few experiences in life that can compare to being on a newly discovered road on your motorcycle.



At Compass, we think that there is nothing wrong with breaking the world up into bite-sized chunks. So, if you don't feel you have the time to ride the entire world right now...take a look at our unique range of motorcycle adventures and join us to ride the world one chunk at a time.

We have our own fleet of BMW motorcycles, knowledgeable ride leaders, a support vehicle and the experience to know which roads are the good roads and which roads are truly great!

18 Day Patagonia Explorer (Nov, Dec, Jan, Feb)

Santiago - Bariloche - Ruta 40 - Perito Moreno Glacier - Torres del Paine - Ushuaia.
Voted by National Geographic Traveler in their 2011 "Top 50 Motorcycle Tours of a Lifetime". A motorcycle tour through this region will be some of the greatest biking moments of your life.

9 Day Southern Lake Explorer (Jan)

Santiago - Pucon - Bariloche - Pucon - Santiago
This ride shall take in some of Chile and Argentina's finest scenery as we enjoy ancient forests, emerald-deep blue lakes and superb mountain scenery on this wonderful nine-day motorbike tour of the Chilean Lakes district and Argentina's epic seven Lakes ride.

16 Day Atacama to Machu Picchu (April)

Starting on the Pacific coastline we explore the Atacama Desert before reaching the salt lake of Uyuni, Potosi, La Paz, the death road (optional), before we ride via Lake Titicaca to the Incan capital of Cuzco. There is plenty of time for reflection on this adventure as we ride from the coast to the cloud forest citadel of Machu Picchu.

23 Day Los Andes Tour (May)

Starting in Cuzco and Machu Picchu we travel the width of South America via Lake Titicaca, Uyuni, Atacama Desert, Salta and Iguazu Falls before a flight to Rio de Janeiro for a final night of fun.
An incredible journey from ancient cultures to modern maravillas!

14 Day Best of Brazil (June & July)

Experience the beautiful Brazilian coastlines, mountains, jungles and waterfalls on this adventure from the beach city of Rio de Janeiro along the Emerald Coast up Serro do Rio Rastro to steamy Iguazu Falls. This stunning country is heaven by motorcycle and we run a reverse tour from Iguazu to Rio in case once is not enough.

42 Day South America Coast to Coast (July)

This fantastic journey explores all of the highlights from the Atlantic to the Pacific and we are the only company that offers this extensive experience. Rio de Janeiro, Iguazu Falls, Salta, Atacama Desert, Uyuni salt flats, Potosi, La Paz, Lake Titicaca, Cuzco, Machu Picchu, Colca Canyon, Arequipa, the mysterious Nazca lines and Lima. Pure riding pleasure!

27 Day Atlantic to Altiplano (July)

This adventure begins in with a visit to steamy Rio de Janeiro before we meet the BMWs in Penedo for the ride along the Emerald Coast up Serro do Rio Rastro, to Iguazu Falls and onwards to Salta, Atacama Desert, Uyuni and ending in La Paz. This 5650 km adventure rides all terrain, immerses riders in different cultures and invigorates the soul!

17 Day Agua y Salares (July)

From Rio de Janeiro you are flown to Iguazu Falls where the motorcycles will be waiting to begin this incredible journey across northern Argentina, the stunning Atacama Desert, Uyuni Salt lake, and the Andean mountains before visiting the silver capital of Potosi and finally ending in the high altitude city of La Paz. A true adventure on 2 wheels!

15 Day Highlights of Peru (July & August)

Peru is a land with incredible depth throughout its varied history. Since pre-Incan times cultures have arisen and flourished in this land before collapse or absorption. This adventure visits many of these cultural centres such as Nazca, Colca Canyon, the Quechuan people of Cuzco and Machu Picchu and the Aymara of eastern Peru and Bolivia.

23 Day Andean Discovery (September)

This tour focuses on some of the most picturesque areas in Bolivia, Argentina and Chile passing through many of the locations that have come to fame in the Dakar Rally. Remote valleys, wineries, winding canyon tracks finally ending in the beautiful lake district of Bariloche and Pucon. This adventure takes you to the parts of South America we love.

For more information on our motorcycle adventures or for our Major Expeditions such as Cairo to Capetown, London to Magadan or tours in Africa, Europe or Asia please visit our website, request a DVD and sign up for our newsletter. We look forward to riding with you soon.

www.compassexpeditions.com info@compassexpeditions.com

More from the peripatetic Ian Macartney

Well, Ian made it home from Garmisch-Partenkirchen long enough to catch up on some work and ride his GS a bit, then he needed to go to Aus and shift his Strom before it got a parking ticket.

So he moved it from Darwin to Perth.

And then came home again.

And then went back to Aus.....

G'day g'day,

On the road again! Perth to Melbourne.

Been a busy couple of days here at the HUBB event - so much going on and so many interesting people and speakers to meet and hear.

Well organised, great food and interesting accomodation. Possibly 120 Adventure Travellers here with every conceivable bike, gizmo, luggage and gear, even one or two Harley's & a Victory.

(<http://www.horizonsunlimited.com/>)

Half a day tomorrow and then head South.

Some people are just starting and some have been everywhere on the Planet. Workshops were excellent, pulling everything off their bikes and laying it all out, showing various mods they had made, clothing, bedding, spares, homegrown to hi tech. Tons of info.

Movies showing all day, eg "On Any Sunday" plus adventure movies. Raised \$1100 for The Royal Flying Doctor Service from a \$5 Raffle - top prizes.

Cheers,

Ian

W650 Kwakka with wooden sidecar.



There's a Queensize bed in there too.



8 years on the road and this is what we took on our Africa Twin with 280,000km on it.



Tyre workshop



Postie bike around Australia - done 30,000km so far & half way (bought at 30,000km from Post Office)



G'day g'day,

Monday

Another pearler of a day in the South West.

Headed south after a night with friends in the hills above Dunsborough. Great to catch up again. 100km along Caves road past a zillion Vinyards including Vasse Felix, Happs, Evans Tate.

Massive Forests of Karri all day - like huge trees and great roads with awesome curves, twisties and undulations.

The region alongside Margaret River had jewellers, handcrafts, furniture, chocolate, fudge, olive oils, fantastic beaches and caves.

I was keen to see the Cape Leeuwin Lighthouse as it's been on my Bucket List since 1980 when I was an Engineer on the "Montreal Star". We had a 'wee moment' as we sailed by enroute from

Iran to NZ, almost ending up on the rocks. It was dinner time and the ship was rolling quite heavily and the motor was stopping at the end of each arc then starting again. The 2nd Mate Gary Neill (later the Assistant Pilot when the Mikhail Lermontov sank in the Malborough Sounds) phoned down to see what was happening as we were dangerously close to Cape Leeuwin. Apart from the stalling engine everything was normal so I hit the General Alarm which meant every Engineer raced to the Engine Room in full Uniform.

For 20 min no one could find out what the problem was until the 4th Engineer remembered the same thing on a previous ship caused by Low Level in Piston Cooling Tank automatically shuts the Engine down as a safety measure. This was the problem, which landed the 3rd Engineer in big doodoos as he had falsified the Ship's Engine Log, a legal document signed off at the end of each watch.

The funny part was when I asked the 4th Eng how close were we to the Cape and he said, "We were close enough that I made a date with the Lighthouse Keepers Daughter."

Guess that was close enough.

So on a stunning day I did the the Lighthouse Tour, the most South Western Point of Australia where the Southern & Indian Oceans meet.

From here I fuelled up in Augusta and headed back into the Forests and National Parks. Bit wary of Roos as I'd seen a huge one disappearing into the bush in the morning and a few very large dead ones on or beside the road. Dont think you'd have much of a chance greeting one of those on the Bike.



It was an 80-90km/hr day as that was the speed limit and it was more than enough to enjoy the country. Just before Walpole I nearly ran over a large 1.5m snake crossing the road on my side - only saw it at last second and missed head by not much. Don't know if he got across as there were two 4WD coming the other way.

Up ahead there was a massive pall of smoke across the sky. Stopped at Walpole Info kiosk and could hear the

Flames roaring and exploding nearby. Even though it was a controlled burn I couldn't believe how fast it moved, you couldn't outrun it as it swept past.



Still a few clicks to Albany but not a lot of time before Sunset. A quick flick through the Loop Road of Valley of the Giants of Massive Karri Trees. It was several degrees colder inside the Forests and required an extra jacket. Rocked in to Albany, an old Whaling Town, but a cold southerly was blowing so found a Motel, had a meal and crashed.

Tuesday.

A stunning cloudless, no wind day.

Headed in the wrong direction for 15 km out along Frenchmans Road to the Whaling Museum.

Spent 2 hours looking at an original Whale Chaser, watching movies, and looking at Whale Skeletons. They recovered 7 tonnes of Oil from a 50 tonne Whale.

In its day, which wasn't that long ago, the bay below was full of huge Sharks feeding on the scraps or attacking the Whales tied to the Pontoon awaiting processing.

1130am VStrom's fuelled up and its 500kms to Esperance.



A lot different to yesterday's ride, low scrubby bush and open farmland but there was a LOT of wildlife. 2 pairs of big Roos crossed the road about 100m ahead of me and lots of dead roos & snakes & a cool little Blue Tongue Lizard scurrying across in front of me.

Had lunch in a small park in Jeramungup with a fly net on as they are pesky little critters. Covered most of the food groups, healthy - peppermint tea & an apple, sugars - Sour Worms, comfort - Wagon Wheels.

A lot of oncoming Road Trains pack a big Air Impact. I rode behind one for 50km so it would hit the Roos before me- only

problem is the air turbulence.

Huge Farms and Grain Silos most of the way and not much else except a huge mine of some description on the Horizon. Rode in to Esperance at 5pm.

500km in 5.5hrs with 2 stops. (4.2 litres /100km yesterday, 23.77km/litre.)

Found a cool little Motel, gassed up & got a Chinese Takeaway - ready to head 400km to Kalgoorlie tomorrow.

Cheers,

Ian



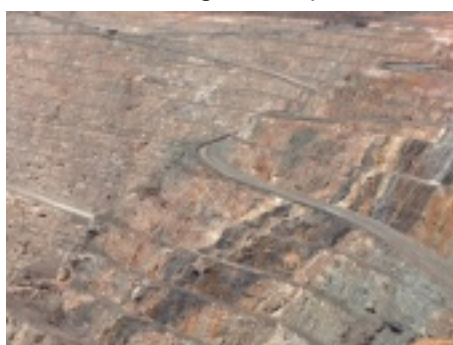
Little Creatures Beer, a Fremantle Brewery. \$23 / 6bottles as recommended by Beer Connoisseur Mr Kenneth Freeman of Willaston (now retired and studying Cider I believe.)

But wait, there's more. (Just before I needed to send the file to the printers. Ed.)

G'day, g'day,

After a primo 400km ride from Esperance yesterday to Kalgoorlie I caught up with friends I haven't seen for a long time. Great night in Kalgoorlie, which has some classic heritage buildings.

Below: Kalgoorlie Super Pit



Thursday

Pushed the boat out today & rode bit further than planned as originally was going to stop at Cocklebidy but kept going to Eucla, another 300km.

Bit nerve wracking to say the least - darkness closing fast in last hour and a half, temperature plummeted from 25 to 14c, fuel reserve light flashing and heaps of big dead Roos on roadside, live Emus, dead snakes & a massive black eagle - like huge - feeding on a Roo & just stood there as I rode past 3 metres away.



Feeling Lucky Punk? Animal Roulette - Game on !

Went against all my guidelines to stop riding at 5pm. There was the most amazing sunset in purples and gold behind me.

Made it to the Eucla Motor Hotel at 7pm - very grand title for \$125 night 60s room, bed made by The Trampoline Company, intermittent TV, etc. Bike parked in top spot outside room door on walkway which is possibly only 10 m from where Manager said to park it.

Thinking of making Adelaide Saturday if I cover the 800km Fri to Kimba and 450 km Sat to Adelaide

When I made the Turn at Norsman on to the start of the Nullarbor Rd, had ridden 2000km since Perth and it was 2050 km to Adelaide. This is one massive country. The WA map didn't even cover the 700km of road to the border nor did Lonely Planet - it's practically No Mans Land.

Saw one bike early on and nothing going my way the last 3 hours. As I left Caiguna Roadhouse there were 8 Roos crossing the Road - amazing to see them move at pace.

Some guy was walking East in the 37c heat pushing a pram - hopefully there's a soft padded room waiting for him up ahead.

Then in the dark two cyclists were riding west in the headlight of a support van.

ABs test on but may not make the kickoff. If not feasible I can cruise to Ceduna and Port Augusta then Adelaide. Hope to see Bunda Cliffs and Head of Bight tomorrow, maybe some whales.

Bike's purring, and gave it a few drinks of top shelf 95 Octane, weather's been brilliant but started at 25c in Kalgoorlie then got up to 37c and dropped down quickly at end.

Clock went forward 45min at Caiguna (300km back) and 12 km down road at State Border it moves forward 1 hour 45min

Just waiting for Dinner assisted by Coopers Pale Ale. Funny all the beers are from the East even though still in WA.

Cheers,

Ian

Please forgive me, Father, for I have sinned.

Riding a V-Strom instead of my dream machine, the Triple Black GS, last of the air cooled models. Yes, as much as I wish I was on the GS, it wasn't a viable solution to ship it here and leave it here for up to 3 years, the Finance Minister wouldn't let me have 2, at A\$150/day to hire one for potentially 16 weeks overall is considerable so a V-Strom with a huge dealer network in Australia unlike BMW was the only practical solution.

It's never going to be a GS but even an older 1150GS with high km still commands top money here. It could also have been a KLR 650, XT660 etc as every small town has a Quad bike dealer to service the farmers, even then it's a long way between drinks.

Still hopefully it's the ride that matters, the people you meet and the beers you sample more than brand dogma.

The V-Strom ticks the right boxes for a mostly sealed ride of 25,000km in Australia. Crucially it's got a 22.5 litre tank as Gas Stations can be almost 300km apart. Fully loaded using 5litres/100km you can safely run to 300-350km per tank.

The speed limit in Northern Territory is 130km/hr. Otherwise it's usually 110kph. I usually maintain 105-110km/hr as its pointless going faster when the distances are huge and the wildlife encounter factor high.

My bike's set up:

- Hepco&Becker Panniers
- Givi Maxi Top Box with a chill bag inside
- Givi 40 litre Dry Bag/Motodry
- Tank Bag.Strap on but a Quick Lock Ring would be good
- MADSTAD 18" Adjustable Screen
- Handguards (heated would be great too like my GS)
- Seat -custom NZ 'Riders' plus an Airhawk 2. Seat's ok to 600km day but Airhawk goes the distance.
- GPS - Garmin Zumo 220
- Centre Stand - SW Motech. Need it to service chain (miss the shaft drive)
- Sump Guard
- Engine Guards
- Aux socket - for GPS & phone charging
- Extended mudguard - stop stones flicking up to radiator.
- 3M clear Heavy 3mm Vinyl over headlamps.

Clothing:

- Revit Adventure Jacket sans liners. (the Revit Air Jacket would be good, need serious ventilation that works)
- 5000mm Oxford Chillout soft shell as liner and general jacket.
- Revit Fluoro Rainjacket as outer and for general wear.
- Revit Sand Adventure Gloves (most used)
- Revit H2O Keprotech Gauntlet Gloves for cold and rain
- Resurgence Jeans with 23sec rating
- Revit Tribal Jean style waterproof pants
- Tornado waterproof over trousers as back up. A good pair of lightweight Adventure pants would be good.
- Helmet - Arai X4 Explorer Helmet with peak and lots of vents. Peak is invaluable in the harsh sun
- Polarised sunglasses (with a clear lens fitted on the Helmet)
- Boots - Converse 9" lace up&side zip waterproof , plastic toe cap. www.voodootactical.com

Lots of other boots out there too but I needed a pair I could hike in if possible and so far these have been excellent. Didn't take Adventure Boots as too bulky and not best to walk in. Road boots would be fine too.

That's what I've found works without going to a Touratech Companero or similar as I leave all the gear with the bike & I've got other gear back in NZ.

The Plan :

To ride around Australia in 6 or 7 legs of 2-3 weeks each.

The expensive part is when you fly in/out of Darwin & Perth otherwise the Trans Tasman flights are reasonable .

If you had the time and could spend say 6-7 weeks riding Brisbane - Darwin - Perth - Melbourne you could save the dearer fares.

Bike storage - relatives, friends or Public Storage for up to \$120 / month

Registration around \$450 per year incl 3rd Party

Insurance - QBE around \$300

Mobile Phone - Telstra by far best coverage . Use 3-6 month prepaid plans. See website.

iPad - Telstra 12GB for 12 months for \$180 NB: iPad and phone invaluable for finding and booking Accom or researching areas, sending emails , taking photos, having downloaded Guidebooks , Routeplanning daily etc.

Personal Locator Beacon, Hutchwilco. Bought for this current leg as riding alone. Aussies use SPOT System which is cheaper to buy but has approx \$100 annual fee and more 'soft' message

options than PLBs ' send the Calvary ' in extreme emergency.

SO FAR:

Started last year : 1 Brisbane to Adelaide 2400km , 2 Adelaide to Darwin.4500km

This year: 3 Darwin to Perth 5500km, Perth to Melbourne 4500km

I find the short breaks suit me and are long enough. I do a skeleton plan and research places read books about things to see beforehand leaving flexible rest/sightsee days. Usually ride 2 or 3 days then stop for one day.

Sometimes get ride over by lunchtime and look around in afternoon as you can easily average 100km/hr.

Ride distance 400-600km day but have occasionally done 800-900km to pick up an extra day however not recommended practice here due to high potential of wildlife encounters & fatigue issues due to heat and straight roads.

8am- 4pm safest hours but not guaranteed by any means.

The number of abandoned, rolled and smashed vehicles, tyre marks heading south & dead animals means you don't have to be a Rocket Scientist to join the dots. Some pretty sobering sights.

If you want to buy a bike check out Queensland Govt website as there's more to it re obtaining a Drivers Licence as the Licence Number is the Number you need to buy and sell vehicles.

Check out the Forms of ID required Section.

This was my experience: you may hear of people saying the Dealer organised it, great will save you a lot of hassle. Or you may have someone who will register bike in their name so I'll guess they'll get the Fines if they come too.

Insurance Company didn't want to know me without Aust Driving Licence.

I found I needed: Aust Bank Account, Aust Eftpos card , Friends Aust address.

To find or research bikes check out : www.bikepoint.com.au or www.bikesales.com.au

You will need an Australian mobile or friendly Australians home number to enter to find out Bike owners' contact info. NZ Number doesn't work easily.

Hope this helps if you're interested.

Any good road bike will do this trip but it must be comfortable, reliable and be capable of 300km plus on a tank.

Check out www.bikeroandoz.com.au Specials Tab for one way return to base Hire deals. The background info on when to go where on this site is very good also.

If you get it wrong it won't be enjoyable in 46c heat or snow.

Ian Macartney

(Ride will continue Dec/Jan issue.)

Cyclespot Group

New Zealand's #1 BMW Dealer and MTA Dealership of the Year 2013/2014

Last One R1200 GSA

In Stock Now

With Free Alloy Pannier Set

\$29,990 Ride Away

2 Year Warranty, Unlimited Mileage



F800 GT Price Reduction

ABS, ESA, TPC and Rear Rack

\$18,995

2 Year Warranty, Unlimited Mileage



HP4 Comp

Best Gets Even Better

DTC, DDC, Race ABS, Heated Grips

\$42,990+ ORC Ride Away

2 Year Warranty, Unlimited Mileage



Cyclespot Euro offers sales and service of BMW motorcycles in the greater Auckland area. We stock a comprehensive range of genuine BMW accessories and BMW rider wear. Whether you are an adventure rider, commuter, learner, track day enthusiast or long-distance tourer, we are happy to make that ride even more enjoyable.

Drop into Cyclespot Euro in Takapuna today or visit cyclespoteuro.co.nz

Become a Cycle spot V.I.P member

Contact 55 Barry's Point Road, Takapuna, Auckland

Telephone: 09 486 3077

A/H Tele: Henry Plowright 027 433 0650



marketplace

Marketplace is a service for members of BMWOR of NZ. Advertisements will be accepted from members, commercial traders and non-members when it is considered in our members' interest to do so. No charge is made for Marketplace advertising. The Editor and Executive reserve the right to reject or modify any advertisement considered inappropriate and take no responsibility for errors or omissions, the quality of items, claims made, or for any transactions that ensue.

Advertisements run for 3 months from the date first published unless otherwise arranged with the Editor.

bikes for sale

Two bikes for sale to make way for one, newer upgrade; both bikes in very good order.

2001 R1150RT



Two owners, 59,000 genuine kms. BMW Luggage. Michelin 'Pilot 3' tyres less than 50% worn.

Additional tall screen included (not shown). Great two-up tourer; never missed a beat on Tibsy's recent 6 day North Island Tour. Won Concourse D'Elegance at the 2011 Masterton Rally. \$7000, includes 3 months rego.

2002 F650GS



38,000kms. BMW top box and Givi soft side luggage. Pirelli Tyres 50% worn, new set of Conti tyres available for negotiated price. Near new chain and sprockets, Scott oiler. Additional lower cut seat also included. \$7000, includes 3 months rego.

Enquiries to Murray Petherick; 0274 336 657 or 03 4486 319. Email pethric@ihug.co.nz (3)

1995 R1100R 130,000 kms, New Zealand new. Accessories include touring screen, trickle battery charger, new battery early 2014, BMW panniers. Good condition for its age and has been garaged while not in use. Asking about \$4,500. Enquiries: Revti Verma, 03 5479897 or 021 460 298 (2)

for sale

Woman's Riding Suit. Olympia AST 2



Jacket and Promax 2 Overpants. With Thermolite insulated liner jacket and pants which can be worn separately. Heaps of useful

features and plenty of armour. Good all year round suit and great for wet and stormy rides. Recently purchased new in the US - Size is US Womans Small. Turns out to be too big for me.

Phone Anne 021-1385264 or email duclng@xtra.co.nz for more information and pictures. (3)

Tyres and parts for a BMW F650GS (single) for sale.

2 x New Mitas EO 9 and 1 used (50%) Tyres

1 x Front 100/90 - S19

2 x Rear 130/80 - S 17 (one used)

2 x New Tubes to fit these tyres

New Front & Rear Brake Pads

New Front Brake & Clutch Levers

\$300 for the lot - contact Peter Nash 021 0823 0972

Or nashs@wnc.quik.co.nz (2)



Brand new Factory Screen for R1200GS 2009 model - \$200.00 (retail \$345.00 new)

Ph Mike 0274989739 or email gsmabmw@gmail.com (1)

wanted to buy

wanted

Tour Leader - for potential multi-day rides on or off road either side of BMWOR national events. Must have own bike, excellent communication skills, practical route planning ability, outstanding navigation skills and loads of patience.

Interested? Give President Peter a call.

On occasion Star Insurance sell parts from insurance wrecks through TradeMe. Take a look at the Star Insurance web site www.star.insurance.co.nz for details



ALL OUT FOR ADVENTURE WITH BMW MOTORRAD.

Take to the trails this summer with one of these fantastic dual purpose machines.

Whether you are a first time rider, intermediate, or an enduro expert, BMW has the perfect machine for you!

For more information or a test ride, see your BMW Motorrad dealer or visit www.bmw-motorrad.co.nz



G650 GS
\$11,995

LAMS Approved

Cyclespot Euro
Takapuna
Auckland North Shore
09 486 3077



G650 GS Sertao
\$13,990

LAMS Approved

Experience
Motorcycles
Kingsland
Auckland City
09 845 5950



F800 GS
\$22,990

Free Panniers*

Mount Motorcycles
Mount Maunganui
07 575 4190



R1200 GS
\$32,990

The benchmark in
adventure riding

Motomart
Wellington
04 589 5106

Hampton
Motorcycles
Hornby
Christchurch
03 349 8968

* Free Vario panniers with the purchase of a new full specification F800 GS, while stocks last. Prices include GST but not On Road Costs.



Experience MOTORCYCLES

* TAP Deal finance and standard credit terms apply

mta Multiple MTA Award winning dealership

Brand New BMW F800 R 1/3, 1/3, 1/3 @ 8.9% Interest*



Save over \$2,500!

BMW's sporty naked developed to offer a great mix between highway and urban riding.

\$12,990 + ORC

Contact Daniel - 021 444 722 or daniel@experiencebmw.co.nz

The real #1. Experience counts.
Experience Motorcycles

www.experiencebmw.co.nz | 0800 7433 269


625 New North Rd, Kingsland, Auckland.

BMW Motorcycle Club
BMW Owners Register
of New Zealand



Registered at NZ Post Wellington as a magazine



Permit Post 
New Zealand
Permit No.148503

BMWOR of NZ | P O Box 109-245 | Newmarket | Auckland 1149 | NEW ZEALAND

AREA REPRESENTATIVES

NORTHLAND

Bwucie (acting) need volunteer
09 401 0029
northland@bmwor.org.nz

AUCKLAND

Your area needs you!
Contact President or Secretary
06 378 2242 or 04 477 6773

WAIKATO

Chris (Chocky) Talbot
07 853 9276
021 184 1927
waikato@bmwor.org.nz

BAY OF PLENTY

Mike Long and Geri Goodman
07 548 1996
bayofplenty@bmwor.org.nz

TARANAKI

Your area needs you!
Contact President or Secretary
06 378 2242 or 04 477 6773

RANGITIKEI

Lance Nixon
06 345 6607
rangitikei@bmwor.org.nz

EAST COAST

Coordinator: John Wuts
06 844 4751
eastcoast@bmwor.org.nz
Rides Master: Dan Young
06 857 7058
diss1@vodafone.net.nz

WELLINGTON

Coordinator: Stephen Oatley
04 567 7479 or 021 058 1094
wellington@bmwor.org.nz

NELSON

Revti and Sue Verma
03 547 9897
nelson@bmwor.org.nz

MARLBOROUGH

Your area needs you!
Contact President or Secretary
06 378 2242 or 04 477 6773

CANTERBURY

Your area needs you!
Contact President or Secretary
06 378 2242 or 04 477 6773

OTAGO AND SOUTHLAND

Andy Hutcheon
027 464 3230
otagosouthland@bmwor.org.nz